



Installing Bereco Cills

This guide is to help with the correct installation and removal of Bereco cill extensions, including angled bay cill extensions, for all window types.



Safety goggles & gloves should be worn at all times.

Removal of Existing Cill Extensions.

This section of the guide will help with the removal of a fitted cill extension when there is no access to the screws under the cill.

Tools List

1. Cordless drill
2. Hammer
3. Stanley knife
4. Chisel set

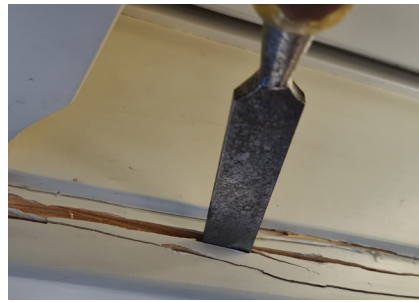
1

Cut along the sealant joint between the cill extension and the window frame to separate the sealant. Several cuts will be required to reach the 5mm depth of the cill extension tongue located within the cill groove.



2

Using a sharp chisel cut across the cill extension 10mm from the face of the window. Continue across the cill extension until it breaks free.



3

Once the majority of the cill extension is removed you will have access to the anchoring screws, these should now be removed.



4

As Bereco Cill Extensions are glued into the cill groove for extra strength, there will be some timber from the cill extension left behind within this groove. Some timber may also be stuck to the window below the groove. All remaining timber from the cill extension should be carefully removed with a sharp chisel, taking care not to cut into the window itself.



5

Once all the remaining timber and the screws have been removed please refer to the section of the guide labeled Installing Bereco Cill Extensions

Installing Bereco Cill Extensions.

This section of the guide is to help with the correct installation of Bereco cill extensions for all window types. **Following this guide will ensure a correct, secure fit reducing issues in future.**

Tools List
Cordless drill
Silicone gun
Hammer
Silicone finishing tool

Materials List
New cill extensions
Opti-joint xp flexible sealant
45mm wood screws

A clear cill groove is necessary to fit the new Cill Extension, therefore any existing Extension must be removed prior to fitting (see Removal of Existing Cill Extensions for more info).

1

Drill and countersink pilot holes in the angled groove on the underside of the cill to accommodate the 45mm wood screws. The first hole should be drilled 50mm from both ends of the cill, then another drilled every 150-200mm for sufficient strength.



2

Using Opti-Joint XP flexible sealant, apply a bead both within the cill groove on the window and to the section of timber just below the cill groove as seen in the pictures below.



3

Gently tap the cill into the cill groove, ensuring it sits level and even along the width of the window. We recommend using a piece of softwood or other solid item to protect the paint finish from damage.



4

Screw the cill to the frame using the pre-drilled holes and 45mm screws, being careful not to over tighten screws causing the timber to split.



5

Using the Opti-Joint XP flexible sealant, apply a small bead along the top joint where the cill meets the window frame. Using a silicone finishing tool or similar item, scrape off any excess leaving a small bead of flexible sealant to seal the joint. Allow 15 mins for the opti-joint xp to partially set & apply 2 coats of paint.



Joining & Installing Angled Bay Cill Extensions.

This section of the guide is to help with the cutting and correct assembly of an angled bay joint. Following this will ensure cill joints are strong enough to resist seasonal timber movement of the timber and will not move and split apart.

Tools List
Mitre saw
Biscuit joiner or Router with biscuit cutter
Cordless drill
Silicone gun
Hammer
Tape Measure
Angle finder
Silicone finishing tool

Materials List
Cill extensions
Opti-joint xp flexible sealant
45mm wood screws
Metal stretcher plates
Wooden biscuits

- 1 Cut cill extensions to correct angle by dividing the bay angle in half to achieve the correct angle of cut (This angle must always be checked on site and not from manufacturing details). It is always best to work on one section of a bay cill at a time, checking the angles again after fitting each section.



TIP: When measuring and marking the length of the bay cill ensure you mark and measure on the knuckle of the cill extension and not the back side of the cill tongue.

- 2 A slot should now be cut in the end grain to accept a biscuit joint



- 3 Apply exterior grade wood glue into both halves of the biscuit rebate and to one face of the end grain



- 4 Working on one piece at a time, install the cill extension onto the window (See Installing Cill Extensions section of this guide for more information). Insert the biscuit to hold the joints flush, then install the next piece of cill extension. Metal fixing plates should be fixed across the join on the underside of the cill to prevent the joint from opening up during seasonal movement.



- 5 The cill joint should now be sealed with opti-joint xp flexible sealant, allowed to cure for 15 minutes, and then touched up with paint to finish (paint is supplied with the original order, more can be ordered on request).